



Washington Association of Conservation Districts

Five Things to Know for April 18, 2024

<https://wadistricts.org> ☼ <https://wadistricts.us> ☼ <https://wacdpmc.org>



In her spare time, Heather Wendt, WACD Director of Development & Engagement, serves as the Co-Chair of the [Columbia Basin Chapter of the Washington Native Plant Society](#) (CBWNPS).

This past weekend the Chapter hosted a wildflower hike on Badger Mountain. Photo Credit:

Richard Zimmerman, [Friends of Badger Mountain](#)

In this issue:

Five Things to Know:

1. WA 64 Apple Naming Contest
2. WACD April 15th Board Meeting Notes
3. PMC Update for April 18th is Now Available
4. Record Low Snowpack Reported as of April 1st
5. Spring Legislative Workshop Agenda & Registration Info

Executive Corner: Thoughts on advancing equity in conservation programs

Five Things to Know

1 – WA 64 Apple Naming Contest

If you have ever wanted to name an apple now is your chance! WSU has received a patent for WA 64 and would like your help in naming the new variety. Per the [WSU website](#) the apple is described as:

...an attractive pink blushed apple with outstanding eating quality, being both firm and tasty. WA 64 is a Washington State University (WSU) apple release that originated from a cross between Honeycrisp and Cripps Pink (aka Pink Lady®) that was made in 1998 at the Wenatchee Tree Fruit Research and Extension Center. The apple is small to medium, and round with 40 to 70% of the surface covered with a pink blush over a yellow background. It colors well if exposed to direct light.

The winner receives a prize basket full of WSU goodies. Visit the [WSU website](#) for more information and to submit your name suggestion. Go Cougs!

2 – WACD April 15th Board Meeting Notes

The WACD Board of Directors met on Monday, April 15th for their regular April meeting. After partner reports from FSA, WADE, NACD, and the Commission as well as hearing from the North Central Area districts, the Board of Directors focused on updating WACD's financial policy manual and procedures. Once the draft minutes are approved by the Secretary, they will be posted on our [Board Meeting webpage](#).

3 – PMC Update for April 18th is Now Available

Spring means growth and the PMC is working to grow their education and outreach offerings. The PMC is working on a User's Guide which will outline what the PMC is, what it does and what goods and services it can provide to conservation districts. This will take the form of a

printed brochure and an electronic file that can be shared. A first draft should be ready to share soon. Plans are also afoot to hold an open house for CD staff in mid-August. You can view the complete update provided by Jim Brown, PMC Nursery Manager, [here](#).

4 – Record Low Snow Pack Reported as of April 1st

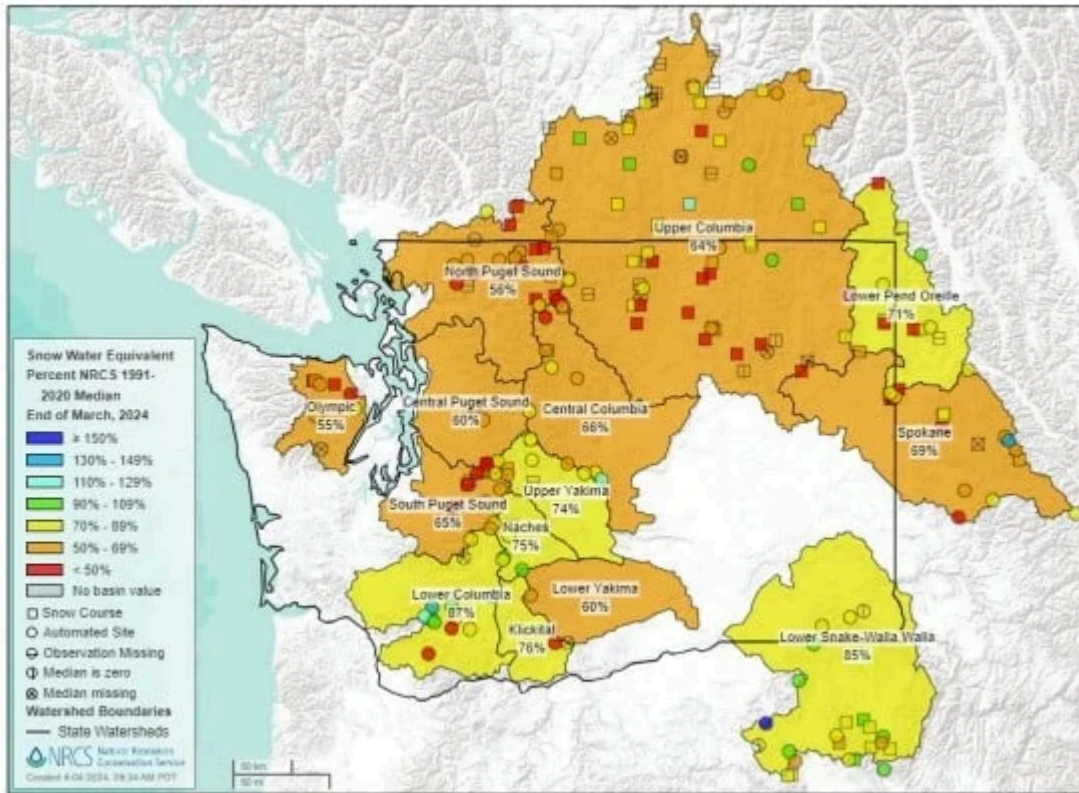
The Washington Water Supply Outlook Report for April 1s has been released and the prospect of drought is looming. Matt Warbritton, Supervisory Hydrologist, with the Portland Data Collection Office, USDA NRCS reports:

The normal timing for peak snow accumulation has passed or is near for all major basins in Washington. Snow drought conditions, in some cases severe, persist across much of Washington, notably in the Puget Sound Basin, Olympic Peninsula, portions of the Lower Yakima, and across much of northern Washington and into the Idaho panhandle. Several snow courses and SNOTEL stations from the central Cascades and across northern Washington have record or near record low snow-pack as of April 1.

Drier conditions for these regions in March, with the exception for parts of the Upper Columbia, has exasperated deficits in water year-to-date precipitation at several stations, including for parts of the Lower Yakima. Poor conditions in these areas have led a below-normal water supply outlook for the late spring-early summer, with 50%-exceedance forecasts generally calling for below normal stream-flows as of April 1. If drier conditions continue to prevail in these regions over the next few weeks, water resource managers may consider using the lower exceedance forecasts.

A copy of the full report can be found [here](#).

On Tuesday of this week, the Department of Ecology declared a **statewide drought emergency**: <https://ecology.wa.gov/about-us/who-we-are/news/2024-news-stories/april-16-drought-declaration>



Basin snowpack (% of median) as of April 1

5 – Spring Legislative Workshop Agenda & Registration Info

WACD's Spring Legislative Workshop for Conservation District Supervisors, Managers and Partners will take place May 29th and May 30th at the Hal Homes Community Center - [209 N. Ruby St., Ellensburg, WA 98926](https://www.halhomes.com/).

Agenda:

May 29th

- 10:00 am - 10:30 am - Registration & Social
- 10:30 am - 10:45 am - Greetings & Introductions
- 10:45 am - 11:45 pm - Status of Resolutions, Updates & Priorities
- 12:00 pm - 12:30 pm - Lunch (Provided)
- 12:30 pm - 1:30 pm - WACD Committee Updates
- 1:30 pm - 3:30 pm - Sustainable Funding Committee Work Session
- 3:30 pm - 4:00 pm - Wrap-up & Homework
- 5:00 pm - Optional No-Host Evening Social

May 30th

- 8:00 am - 8:30 am - Light Breakfast and Social
- 8:30 am - 9:30 am - Partnership Roundtable
- 9:30 am - 10:00 am - Rates and Charges Discussion and Next Steps
- 10:00 am - 10:30 am - Elections Discussion
- 10:30 am - 10:45 am - Break
- 10:45 am - 11:45 am - Strategic Visioning Session

11:45 am - 12:00 pm - Wrap-up

The meeting will be offered in person and remotely via Zoom.

If you plan on attending either in person or remotely please [REGISTER HERE](#).

Hotel Information: A block of rooms at the government rate have been reserved at the following hotels under the **Group Name: WACD:**

- [Best Western Plus](#), 211 Umptanum Rd, Ellensburg, WA 98926 - (509) 925-4244
- [Hampton Inn](#), 2705 Triple L Loop, Ellensburg, WA 98926 - (509) 933-1600

Questions? Contact: Heather Wendt, 509-873-2669, hwendt@wadistricts.org

Optional Homework for the Spring Legislative Workshop

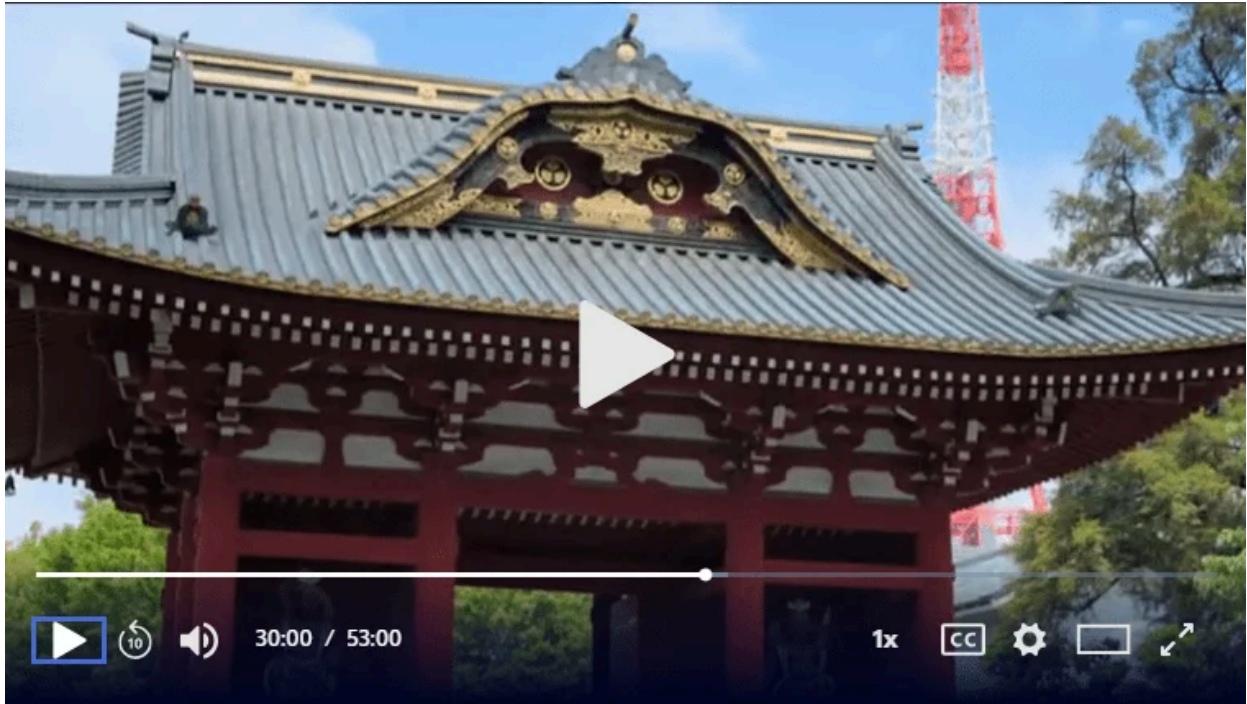
Be better prepared for the WACD Spring Legislative Workshop at the end of May by doing a little light homework!

Last week, we suggested reading the article [Building a Future-Focused Mindset](#). This week, we ask that you watch part of a video. Specifically, start at the 30-minute mark in the first episode ("Beyond the Now") of the three-video series [A Brief History of the Future](#) on PBS. This will help you shift your perspective to a future time. From that vantage point, you can look back on the present and recognize actions that should be started now to help move you toward a better future.

The series widens our perspective of time beyond our lifetimes and joins Ari Wallach as he embarks on a journey to seek the individuals and ideas that can shape a better, more sustainable future that each generation can build upon.

Here's the link to that first video: <https://www.pbs.org/video/beyond-the-now-ft4j2u/>

Slide the slider at the bottom of the video to the 30-minute mark to save some time.



Upcoming Events

2024

- **May 14-16:** [WSCC Planning and Regular meeting](#)
- **May 20:** [WACD Board of Directors meeting](#)
- **May 29-30:** [WACD's Legislative Workshop \(Ellensburg\)](#)
- **June 17:** [WACD Board of Directors meeting](#)

Executive Corner

How to move toward equity in conservation programs

On Monday, I participated in a National Association of Conservation Districts' DEI Special Committee meeting. NACD is building some webinars to provide tools for conservation districts wishing to learn more.

From my point of view, I don't think offering tools and information is going to be enough. Many folks need to be able to see a path forward. They need to know why this information is important to their conservation district. I suggested that NACD could provide that pathway by offering a sequence of actions that looks something like this:

1. **Accessibility:** Focus on how to make conservation district workplaces, meetings, programs, and information more accessible.

2. **Inclusion:** As accessibility improves, more people are likely to be included in the work of the conservation district and the conversations around district programs and services.
3. **Diversity:** When more voices are part of the conversation, we are likely to see a wider range of people participate and more ideas considered.
4. **Equity:** With more voices come more opportunities for the conservation district to focus on fairness in service and programs.

I'll speak today about the first doorway to DEI: accessibility. You might think this means holding meetings in accessible spaces and providing parking for people with disabilities. It is that, and much more. It is also considering that people with disabilities may communicate differently -- they may have trouble hearing you or may have trouble understanding people who speak at a brisk pace. It is language: not just people for whom English is not their first language, but also intergenerational differences in language.

Just as thinking about [conscious language](#) helps us choose words and concepts that work best for our audience, thinking about how to make our workspaces, meetings, programs, and information more available and more understandable helps to identify ways to reach more people.

If you are having trouble wrapping your mind around how DEI might benefit your conservation district, please consider starting by thinking about accessibility and what you could do to improve accessibility to everything your conservation district does.

We'd like to hear from you

As always, we look forward to your ideas and questions. Please reach out to us at oly@wacd.org. Emails sent to that address reach the entire Executive Office team!

Always yours for conservation,



EXECUTIVE DIRECTOR

Latest Posts on the Hub

- [Ag census shows uptick in acres for farmland in Snohomish County.](#)
- [The Benton Conservation District hosts 26th Annual Salmon Summit](#)
- [Skagit CD Conservation Easement Program Liaison](#)
- [PMC Update for April 18, 2024](#)
- [Northwest leaders will gather in Enterprise to promote community forestry.](#)
- [‘Cows can swim’ | Kittitas Co. third graders learn new facts at agricultural field day.](#)

[Recent Posts](#)

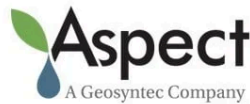
[Jobs](#)

[Reading List](#)

Thank you to the 2023 WACD Annual Meeting Sponsors



Washington Department of
Fish and Wildlife



WACD encourages you to consider patronizing sponsors in appreciation of their important support.



- [AgWest](#)
- [AGPRO](#)
- [Arrowleaf Consulting](#)
- [Aspect Consulting](#)
- [Banner Bank](#)
- [Country Financial](#)
- [BFI Native Seeds](#)
- Larry Davis (individual sponsor)
- [Edward Jones](#)
- [Enduris](#)
- [envu](#)
- [JTI](#)
- [KR Creative Strategies](#)
- [McGregor Company](#)
- [Monaghan Consulting](#)
- [Odessa Trading Co.](#)
- [Plants of the Wild](#)
- [Rainier Seeds](#)
- [RDO Equipment Co.](#)
- Tom Salzer (individual sponsor)
- [Springbrook Express](#)
- [Tapteal Native Plants](#)
- [USDA Natural Resources Conservation Service](#)
- [Washington Department of Fish and Wildlife](#)
- [Washington State Conservation Commission](#)
- [Weyerhaeuser](#)
- [Wilbur-Ellis](#)

Pass it on!

Please pass this newsletter on to others in our conservation community so they can subscribe and be as informed as you are!

[SUBSCRIBE](#)

More information is available on the WACD Hub!

[Visit the WACD Hub](#)

We welcome your [feedback](#)

[Subscribe](#) | [Unsubscribe](#) | [Manage your subscription](#) | [Contact WACD](#)

1219 11th Ave SE, Olympia, WA 98501

(564) 669-7540

